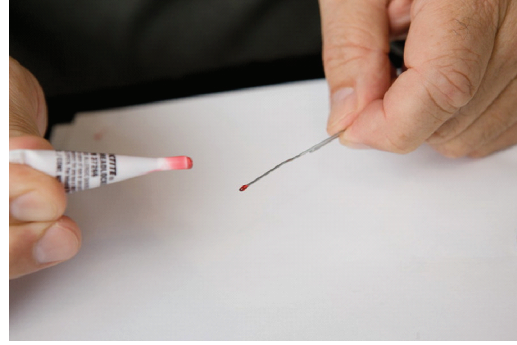


How to seal an end cap



1. DO NOT put the tube on the jewelry.



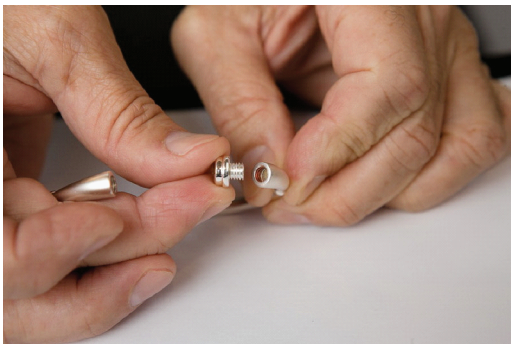
2. Put the Loctite® on the paper clip.



3. Rub the Loctite® paper clip around the threads.



4. Rub off excess Loctite® with the cotton swab.



5. Begin to screw in the cap.



6. Use the rubber band to hold the cap securely. It's tiny and slippery!

If you have any questions about determining your size, our Customer Care Specialists will be glad to assist you. Please call or email us today:
1-888-525-5082 | info@tmkeepsake.com



TREASURED
MEMORIES®

Fine Keepsake Jewelry